



RSUP 10-5CH5

RSUP 10-6CH6

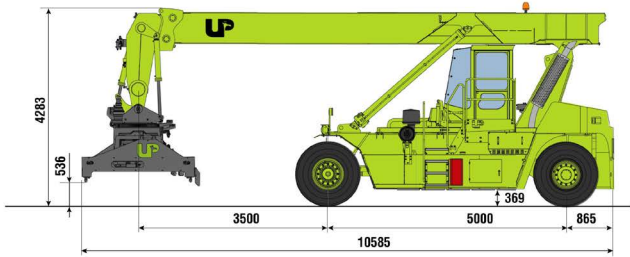
Reach Stacker 10 tonnes
Container Handling



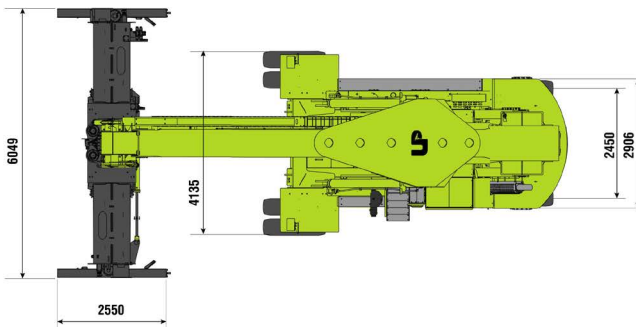
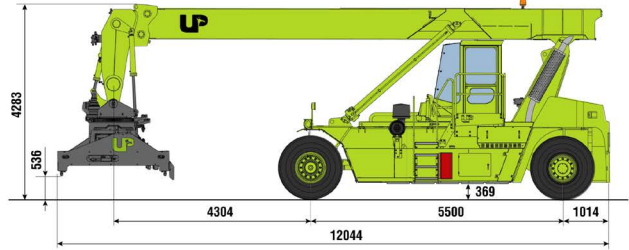
RSUP 10-5CH5 / 6CH6

Reach Stacker 10 tonnes. 5/6 metres between axles. Container Handling. 5/ 6 heights. Dimensions (mm)

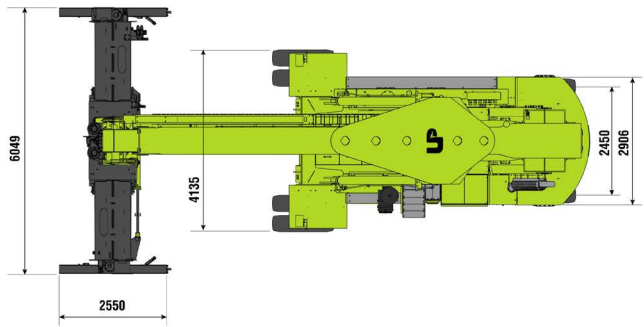
RSUP 10-5CH5



RSUP 10-6CH6



Outer turning radius 6 600



Outer turning radius 7 321

Loads

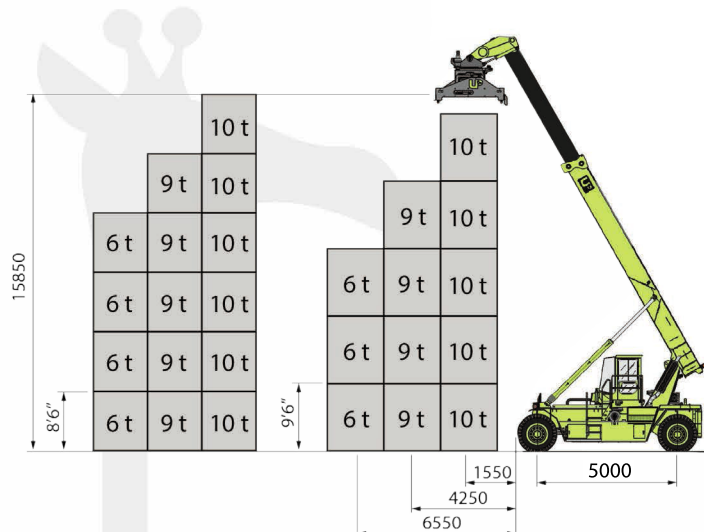
RSUP 10-5CH5	Unladen	Laden*
Front axle weight	24 480 kg	38 935 kg
Rear axle weight	16 870 kg	12 415 kg
Total weight	41 350 kg	51.350 kg

RSUP 10-6CH6	Unladen	Laden*
Front axle weight	27 020 kg	38 980 kg
Rear axle weight	17 080 kg	15 120 kg
Total weight	44 100 kg	54 100 kg

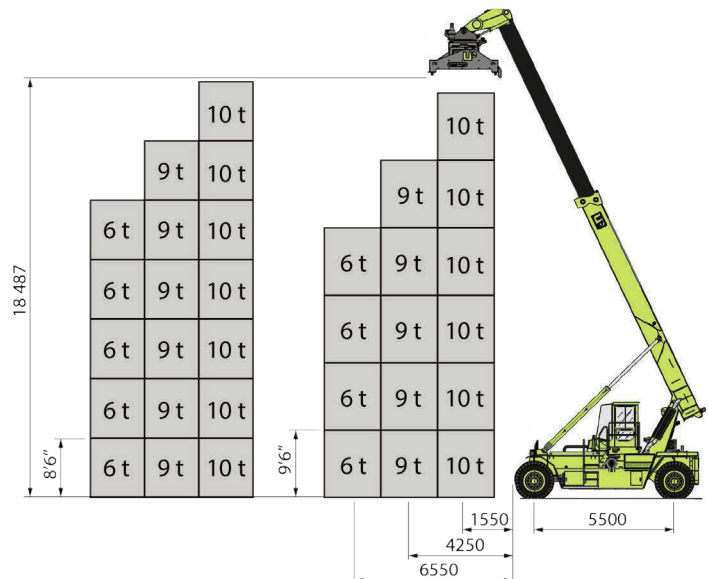
*With a load of 10 000 kg. at 2 250 mm.

Load diagrams

RSUP 10-5CH5



RSUP 10-6CH6



Cab

- _ Excellent visibility all around: ISO/DIS 13564-1
- _ Hydraulic movement
- _ Operator's seat with air suspension
- _ Tinted safety glass
- _ Tilting steering column
- _ Sound proofing ISO/TS 3691 - 7:2011
- _ Accesibility
- _ Ergonomical function control (electric Joystick)

Safety

- _ Safety- glass is used in the whole machine.
- _ Functions control by electronic system.
- _ Safety belt is incorporated.
- _ Non-slip steps to get the cabin.

Engine

	VOLVO	CATERPILLAR
Manufacturer	VOLVO	CATERPILLAR
Model	TAD 871 VE	C7.1
Power (ISO 3046/2534)	185 kw	168 kw
Torque	1150 N m 1400 rpm	1092 N m 1400 rpm
Speed	2200 rpm	2200 rpm
Cylinders	6	6
Displacement	7700 cc	7010 cc

Tyres and wheels

	Front	Rear
Number	4	2
Dimensions	(14.00x24)/28PR	(14.00x24)/28PR

Capacities

Capacity of fuel tank	400 L
Capacity of oil tank	600 L

Electronic control system

- _ 3.5" transfective TFT master color display
- _ Engine, transmission and satellite modules control
- _ External GSM modem
- _ Large internal memory for events and logging
- _ Overload security management
- _ Instantaneous warning display

Transmission

- _ Auto- Powershift
- _ Brand ZF model 3WG 211
- _ 3 forward and 3 reverse speeds
- _ Electronic control
- _ High efficiency heat interchanger for the oil

Electric circuit

- _ Circuit of 24V with 2 batteries of 12V/165 Ah. each
- _ Alternator 24V and 80A
- _ LED lights

Environment

- _ Lowering toxic emissions engine in accordance with Stage IV/Tier 4f.
- _ The use of high elasticity steel ensures the diminution of harmful emissions to the environment.
- _ Stage II/Tier 2 or Stage IIIA/Tier 3 engines for non-regulated regions which do not belong to the EU.

Toughness

- _ Large sections made of high strength steel.
- _ Critical resistant elements get a controlled testing inspection once welded.
- _ A latest generation welding robot is used for welding.

Axles

Front	KESSLER. Heavy duty service
Back	Oscillating steering axle own manufactured. Heavy duty work conditions

Brakes

Service brake	Wet disc brake in oil bath
Parking brake	Disc on front axle

Hydraulic system

- _ Steering control
- _ 2 variable flow piston pumps
- _ Electrical proportional control for the boom movements
- _ Return filters
- _ Auxiliary pumps for cooling system

Spreader

_ Uplifting model	TSEUP 24-A
_ Classification	DIN 15018, H2B4
_ Load capacity	10 t
_ Weight	5400 kg
_ Hooks' capacity	4 x 2.5 t
_ Telescoped pieces	20-30-40 feet
_ Twistlocks	ISO oscillating
_ Rotation	+185°, -95°
_ Transversal oscillation	+/-4°
_ Side-shift	+/-800 mm
_ Telescoping time 20-40'	11 seconds

Optional equipment

- _ Automatic lubrication system
- _ Automatic preselection of boom position
- _ Camera system
- _ Tyre pressure monitor
- _ Fire suppression system
- _ Air-conditioner system

MACHINERY RANGE

Reach stackers

- _ Loads from 10 to 90 t



General load Lift Trucks

- _ Light duty range from 8 to 15 t
- _ Medium duty range from 16 to 25 t
- _ Heavy duty range from 28 to 60 t



Lift Trucks for containers

- _ For laden containers from 32 to 50 t
- _ For unladen containers from 3 to 8 heights
- _ Containers standard handling
- _ Containers longitudinal handling



Spreaders

- _ Telescopic from 20 to 45'
- _ Fixed
- _ Intermodal handling (Piggy-back)



UP LIFTING VERTICAL, S.A.

Ronda de la Industria, Parc 151. Pol. Sepes. 22006
Huesca
Tel. 974 229 832 Fax. 974 242 481
uplifting@gaypu.com

www.uplifting.es

9-4500E-01-13-003-0