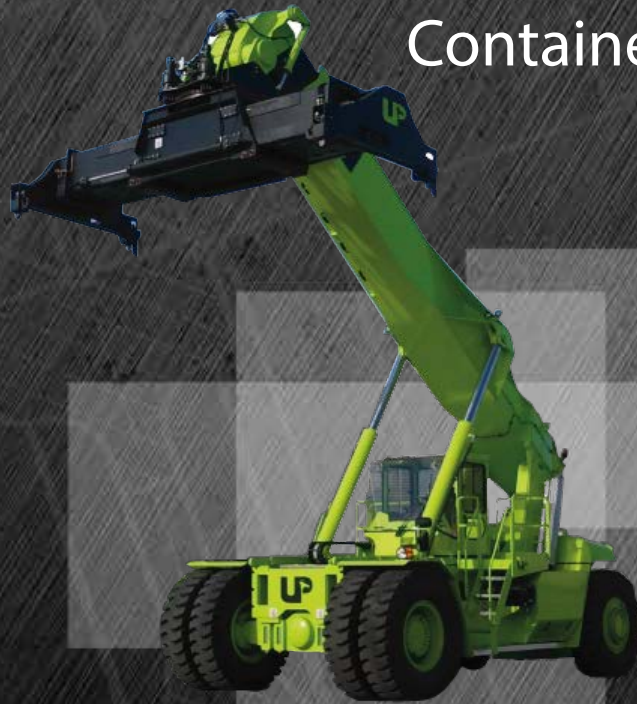




RSUP 45-6CH5

Reach Stacker 45 tonnes
Container Handling

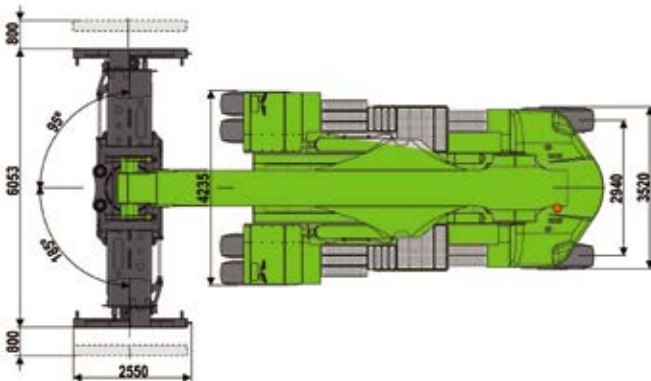
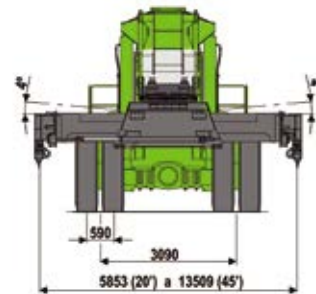
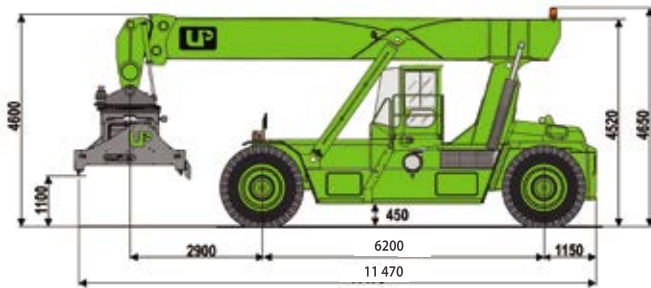


RSUP 45-6CH5(H)(R)

Reach Stacker 45 tonnes. 6 metres. Container Handling. 5 Heights. (Heavy). (Rail)

Dimensions (mm)

Distance between axles	6200
Total length	11 470
Turning radius	8120



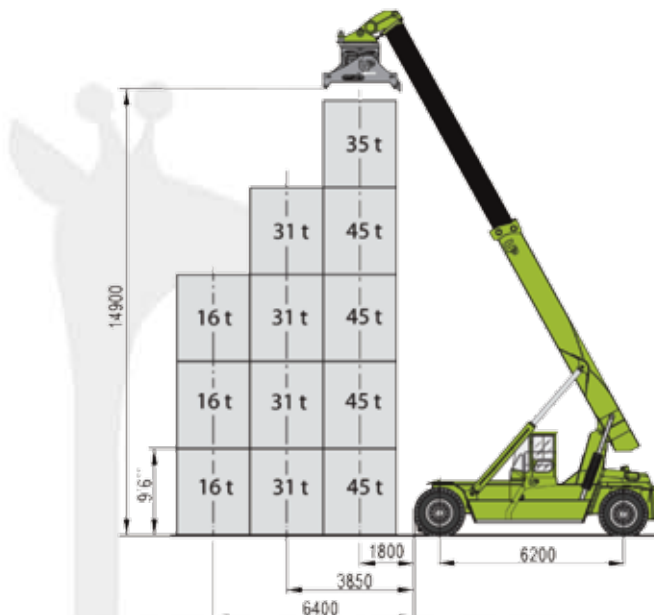
Weights

Model	Unladen	Laden
RSUP 45-6CH5		
RSUP 45-6CH5R		
Front axle	38 000 kg	102 650 kg
Rear axle	36 500 kg	16 850 kg
Total	74 500 kg	119 500 kg

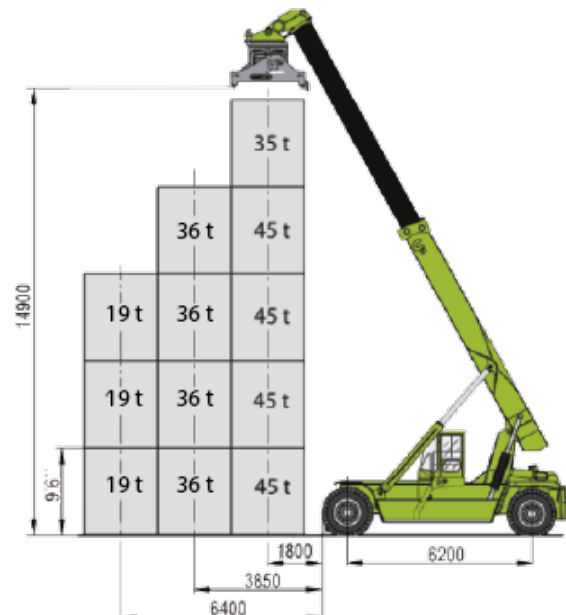
Model	Unladen	Laden
RSUP 45-6CH5H		
Front axle	38 650 kg	103 300 kg
Rear axle	40 500 kg	20 850 kg
Total	79 150 kg	124 150 kg

Load diagrams

RSUP 45-6CH5



RSUP 45-6CH5H RSUP 45-6CH5R



Cab

- _ Excellent visibility all around: ISO/DIS 13564-1
- _ Hydraulic movement
- _ Operator's seat with air suspension
- _ Tinted safety glass
- _ Tilting steering column
- _ Sound proofing ISO/TS 3691 - 7:2011
- _ Accessibility
- _ Joystick which controls boom, spreader and accessories movements.

Safety

- _ Safety- glass is used in the whole machine.
- _ Functions control by electronic system.
- _ Safety belt is incorporated.
- _ Non-slip steps to get the cabin.

Engine

Manufacturer	VOLVO	CATERPILLAR
Model	TAD1171 VE	C9.3
Power (ISO 3046/2534)	265 kw	242 kw
Speed	1900 rpm	2200 rpm
Cylinders	6	6
Displacement	10 840 cc	9300 cc

Tyres and wheels

- _ 4 front wheels
- _ 2 rear wheels

	RSUP 45-6CH5 RSUP 45-6CH5R	RSUP 45-6CH5H
Dimensions	(18.00x25)/40PR	(18.00x33)/40PR

Capacities

- _ Capacity of fuel tank 500 L
- _ Capacity of oil tank 800 L

Electronic control system

- _ 6.5" transfective TFT master color display
- _ Engine, transmission and satellite modules control
- _ External GSM modem
- _ Large internal memory for events and logging
- _ Overload security management
- _ Instantaneous display of warnings

Transmission

- _ Auto- Powershift
- _ Brand ZF model 4WG 311
- _ 4 forward and 3 reverse speeds
- _ Electronic control
- _ High efficiency heat interchanger for the oil

Electric circuit

- _ Circuit of 24V with 2 batteries of 12V/165 Ah. each
- _ Alternator 24V and 115A
- _ LED lights

Environment

- _ Lowering toxic emissions engine in accordance with Stage IV/Tier 4f.
- _ The use of high elasticity steel ensures the diminution of harmful emissions to the environment.
- _ Stage II/Tier 2 or Stage IIIA/Tier 3 Engines for non-regulated regions which do not belong to the EU.

Toughness

- _ Large sections made of high strength steel.
- _ Critical resistant elements get a controlled testing inspection once welded.
- _ A latest generation welding robot is used for welding.

Axles

Front	KESSLER. Heavy duty service Oscillating steering axle own manufactured. Heavy duty work conditions
Back	

Brakes

Service brake	Wet disc brake with oil bath. No maintenance is needed.
Parking brake	Disc on front axle

Hydraulic system

- _ Steering control
- _ 2 variable flow piston pumps
- _ Electrical proportional control for the boom movements
- _ Return filters
- _ Auxiliary pumps for cooling system

Spreader

_ Uplifting model	TSUP 245-A
_ Classification	DIN 15018, H2B4
_ Load capacity	45 t
_ Weight	8950 kg
_ Hooks' capacity	4x10t
_ Telescoped pieces	20-30-40-43-45 feet
_ Twistlocks	ISO oscillating
_ Rotation	+185°, -105°
_ Transverse oscillation	+/-4°
_ Side-shift	+/-800 mm
_ Telescoping time 20-45'	14 seconds

Optional equipment

- _ Automatic lubrication system
- _ RSUP 45-6CH5R: Front supports
- _ Camera system
- _ Remote control
- _ Tyre pressure monitor
- _ Fire suppression system
- _ Air-conditioner
- _ Handling elements
- _ Vehicle fleet management (electronic control system)

MACHINERY RANGE

Reach stackers

- _ Loads from 10 to 90 t



General load Lift Trucks

- _ Light duty range from 8 to 15 t
- _ Medium duty range from 16 to 25 t
- _ Heavy duty range from 28 to 60 t



Lift Trucks for containers

- _ For laden containers from 32 to 50 t
- _ For unladen containers from 3 to 8 heights
- _ Containers standard handling
- _ Containers longitudinal handling



Spreaders

- _ Telescopic from 20 to 45'
- _ Fixed
- _ Intermodal handling (Piggy- back)



UP LIFTING VERTICAL, S.A.

Ronda de la Industria, Parc 151, Pol. Sepes, 22006
Huesca
Tel. 974 229 832 Fax. 974 242 481
uplifting@gaypu.com

www.uplifting.es

9-4500E-01-13-002-0