



# RSUP 45-6IH5

Reach Stacker 45 tonnes  
Intermodal Handling. 5 heights

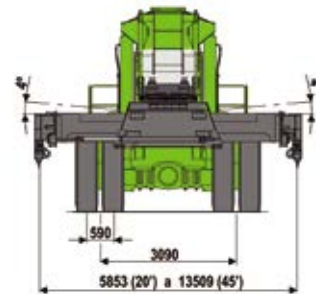
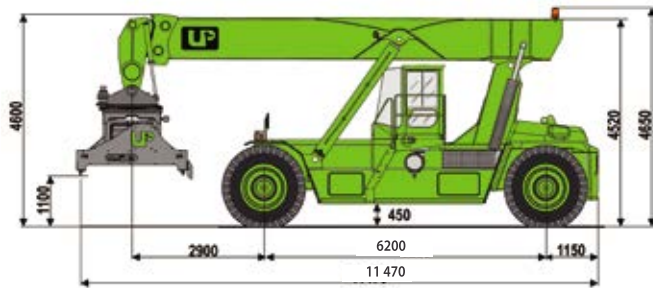


New ways to advance without pause, **step by step...**

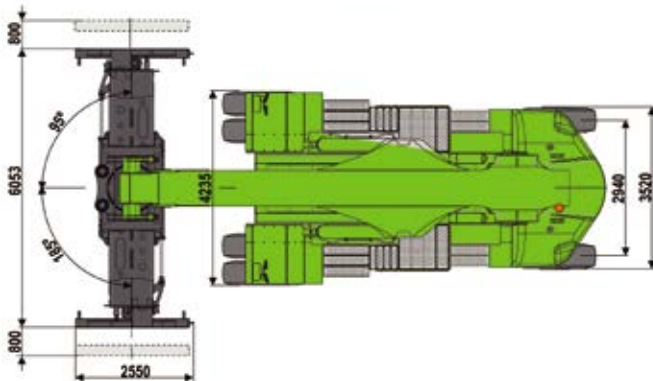
# RSUP 45-6IH5(H)(R)

Reach Stacker 45 t. 6 m. Intermdodal Handling. 5 Heights. (Heavy). (Rail)

## Dimensions (mm)



|                        |        |
|------------------------|--------|
| Distance between axles | 6200   |
| Total length           | 11 470 |
| Turning radius         | 8120   |

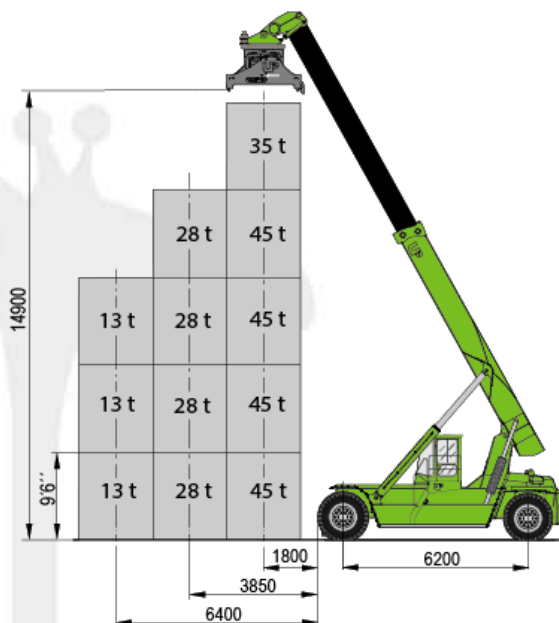


## Weights

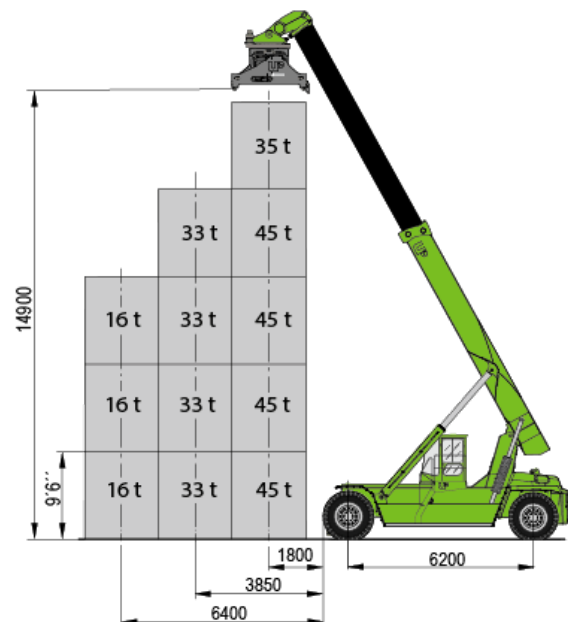
| Model         | Unladen   | Laden      |
|---------------|-----------|------------|
| RSUP 45-6IH5  |           |            |
| RSUP 45-6IH5R |           |            |
| Front axle    | 43 180 kg | 107 830 kg |
| Rear axle     | 35 150 kg | 15 500 kg  |
| Total         | 78 330 kg | 123 330 kg |
| RSUP 45-6IH5H |           |            |
| RSUP 45-6IH5R |           |            |
| Front axle    | 43 830 kg | 108 480 kg |
| Rear axle     | 39 150 kg | 19 500 kg  |
| Total         | 82 980 kg | 127 980 kg |

## Load diagrams

### RSUP 45-6IH5



### RSUP 45-6IH5H RSUP 45-6IH5R



## Cab

- \_ Excellent visibility all around: ISO/DIS 13564-1
- \_ Hydraulic movement
- \_ Operator's seat with air suspension
- \_ Tinted safety glass
- \_ Tilting steering column
- \_ Sound proofing ISO/TS 3691 - 7:2011
- \_ Accessibility
- \_ Joystick which controls boom, spreader and accessories movements.

## Safety

- \_ Safety- glass is used in the whole machine.
- \_ Functions control by electronic system.
- \_ Safety belt is incorporated.
- \_ Non-slip steps to get the cabin.

## Engine

| Manufacturer          | VOLVO      | CATERPILLAR |
|-----------------------|------------|-------------|
| Model                 | TAD1171 VE | C9.3        |
| Power (ISO 3046/2534) | 265 kw     | 242 kw      |
| Speed                 | 1900 rpm   | 2200 rpm    |
| Cylinders             | 6          | 6           |
| Displacement          | 10 840 cc  | 9300 cc     |

## Tyres and wheels

- \_ 4 front wheels
- \_ 2 rear wheels

|            | RSUP 45-6IH5<br>RSUP 45-6IH5R | RSUP 45-6IH5H   |
|------------|-------------------------------|-----------------|
| Dimensions | (18.00x25)/40PR               | (18.00x33)/40PR |

## Capacities

- \_ Capacity of fuel tank 500 L
- \_ Capacity of oil tank 800 L

## Electronic control system

- \_ 6.5" transfective TFT master color display
- \_ Engine, transmission and satellite modules control
- \_ External GSM modem
- \_ Large internal memory for events and logging
- \_ Overload security management
- \_ Instantaneous display of warnings

## Transmission

- \_ Auto- Powershift
- \_ Brand ZF model 4WG 311
- \_ 4 forward and 3 reverse speeds
- \_ Electronic control
- \_ High efficiency heat interchanger for the oil

## Electric circuit

- \_ Circuit of 24V with 2 batteries of 12V/165 Ah. each
- \_ Alternator 24V and 115A
- \_ LED lights

## Environment

- \_ Lowering toxic emissions engine in accordance with Stage IV/Tier 4f.
- \_ The use of high elasticity steel ensures the diminution of harmful emissions to the environment.
- \_ Stage II/Tier 2 or Stage IIIA/Tier 3 engines for non-regulated regions which do not belong to the EU.

## Toughness

- \_ Large sections made of high strength steel.
- \_ Critical resistant elements get a controlled testing inspection once welded.
- \_ A latest generation welding robot is used for welding.

## Axles

|       |  |
|-------|--|
| Front | KESSLER. Heavy duty service Oscillating steering axle own manufactured. Heavy duty work conditions |
| Back  |  |

## Brakes

|               |   |
|---------------|---|
| Service brake | Wet disc brake with oil bath. No maintenance is needed. |
| Parking brake | Disc on front axle                                      |

## Hydraulic system

- \_ Steering control
- \_ 2 variable flow piston pumps
- \_ Electrical proportional control for the boom movements
- \_ Return filters
- \_ Auxiliary pumps for cooling system

## Spreader

|                           |                     |
|---------------------------|---------------------|
| _ Uplifting model         | TSUP 245-B          |
| _ Classification          | DIN 15018, H2B4     |
| _ Load capacity           | 45 t                |
| _ Weight                  | 11 950 kg           |
| _ Hooks' capacity         | 4x10t               |
| _ Telescoped pieces       | 20-30-40-43-45 feet |
| _ Twistlocks              | ISO oscillating     |
| _ Rotation                | +185°, -105°        |
| _ Transverse oscillation  | +/-4°               |
| _ Side-shift              | +/-800 mm           |
| _ Telescoping time 20-45' | 14 seconds          |
| _ Integrated piggy-back   |                     |

## Optional equipment

- \_ Automatic lubrication system
- \_ RSUP 45-6IH5R: Front supports
- \_ Camera system
- \_ Remote control
- \_ Tyre pressure monitor
- \_ Fire suppression system
- \_ Air-conditioner
- \_ Handling elements
- \_ Vehicle fleets management (electronic control system)

## MACHINERY RANGE

### Reach stackers

- \_ Loads from 10 to 90 t



### General load Lift Trucks

- \_ Light duty range from 8 to 15 t
- \_ Medium duty range from 16 to 25 t
- \_ Heavy duty range from 28 to 60 t



### Lift Trucks for containers

- \_ For laden containers from 32 to 50 t
- \_ For unladen containers from 3 to 8 heights
- \_ Containers standard handling
- \_ Containers longitudinal handling



### Spreaders

- \_ Telescopic from 20 to 45'
- \_ Fixed
- \_ Intermodal handling (Piggy-back)



UP LIFTING VERTICAL, S.A.

Ronda de la Industria, Parc 151, Pol. Sepes, 22006  
Huesca  
Tel. 974 229 832 Fax. 974 242 481  
uplifting@gaypu.com

[www.uplifting.es](http://www.uplifting.es)

9-4500E-01-13-004-0