

UP

TUP 50-1200

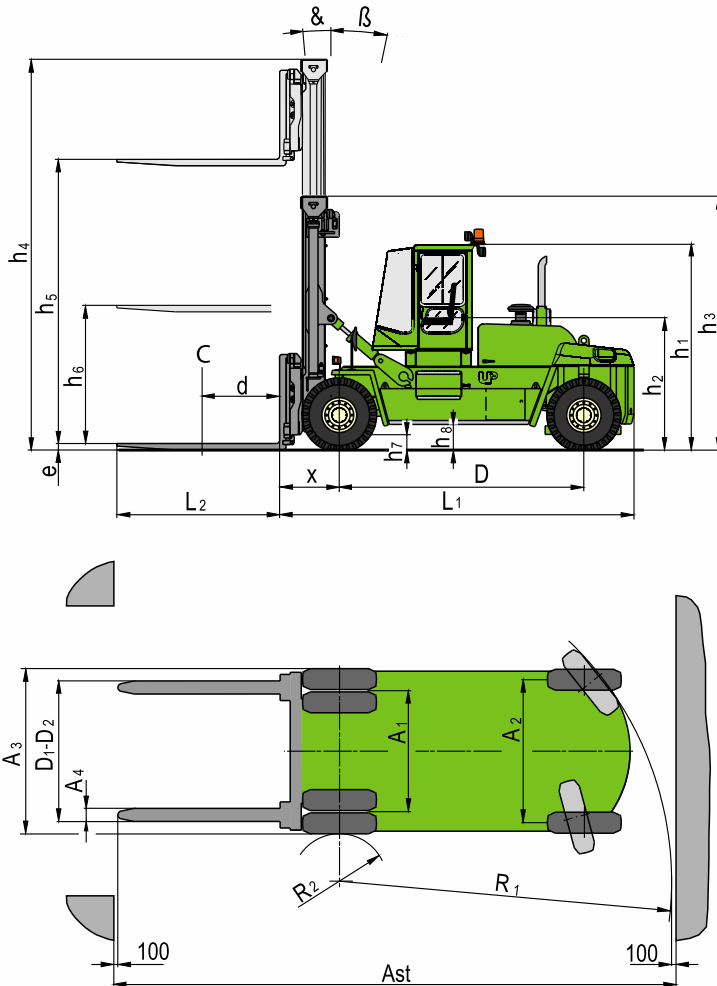
TUP 55-1200

Forklift for general loads
50, 55 tonnes



TUP 50-1200, TUP 55-1200

Forklift for general loads. 50 t, 55 t. 1200 mm load centre.



Dimensions (mm)

OVERALL	TUP 50	TUP 55
Length L_1	8600	9600
Distance between axles D	6000	7000
Distance between wheels:		
_Centres of front axle A_1	3090	3090
_Centre of back axle A_2	2940	2940
Total width A_3	4235	4235
Truck height h_1	4375	4375
Seat height h_2	3210	3210
Distance of the load x	1350	1350
Load centre d	1200	1200

MAST

Minimum height h_3	5650	5900
Maximum height h_4	8150	8400
Height lift duplex h_5	5000	5000
Height lift special duplex h_6	2500	2500
Tilt angle		
_Forwards α	5°	5°
_Backwards β	10°	10°

FORKS

Thickness e	140	150
Width A_4	300	300
Length L_2	2400	2400
Max distance between forks D_1	2280	2630
Min distance between forks D_2	1660	1660
Maximum side-shift	400	400

GROUND CLEARANCE

Under Lift-frame H_7	300
At centre of distances between axles H_8	500

TURNING RADIUS

Outer R_1	7950	9360
Inner R_2	1000	2000

Cab

- _ Excellent visibility all around: ISO/DIS 13564-1
- _ Operator's seat with air suspension
- _ Tinted safety glass
- _ Sideways tilting
- _ Tilting steering column
- _ Sound proofing ISO/TS 3691 - 7:2011
- _ Easy accessibility
- _ Joystick which controls mast and accessories.

Safety

- _ Safety-glass is used in the whole machine.
- _ Functions control by electronic system.
- _ Seat belt is incorporated.
- _ Non-slip steps to get the cabin.

Environment

- _ Lowering toxic emissions engine in accordance with Stage IV/Tier 4f.
- _ The use of high elasticity steel ensures the diminution of harmful emissions to the environment.
- _ Stage II/Tier 2 or Stage IIIA/Tier 3 engines for non-regulated regions which do not belong to the EU.

Toughness

- _ Large sections made of high strength steel.
- _ Critical resistant elements get a visual and a controlled testing inspection once welded.
- _ A latest generation welding robot is used for welding.

Weights

TUP 50-1200	Unladen	Laden
Front axle	33.1 t	104.3 t
Rear axle	29.8 t	8.6 t
Total	62.9 t	112.9 t

TUP 55-1200	Unladen	Laden
Front axle	34.8 t	109.8 t
Rear axle	28.8 t	8.8 t
Total	63.6 t	118.6 t

Tyres and wheels

	Front	Rear
Number	4	2
Dimensions	(18.00x33)/40PR	(18.00x33)/40PR

Electronic control system

- _ 3.5" transfective TFT master color display
- _ Engine, transmission and satellite modules control
- _ External GSM modem
- _ Large internal memory for events and logging
- _ Instantaneous display of warnings

Transmission

Manufacturer	ZF
Model	4WG311

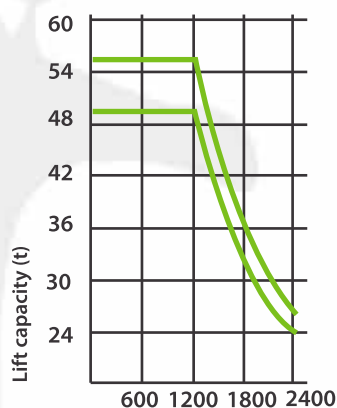
Steering

Hydraulic

Driving axle

Manufacturer	KESSLER
Model	D102PL341/528-NBL

Load diagram



Distance to centre of load (mm)
From the surface of the fork
The lift capacity is with vertical

Engine

Brand	CATERPILLAR	VOLVO
Model	C9.3	TAD 1171 VE
Power(ISO 3046/2534)	261 kw	265 kw
Torque	1596 N m 1400 rpm	1 739 N m 1 400 rpm
Speed	2200 rpm	2 200 rpm
Cylinders	6	6
Displacement	9300 cc	10 840 cc

Speeds

	Unladen	Laden
Travel	25 km/h	22 km/h
Lifting	0.25 m/s	0.22 m/s
Lowering	0.30 m/s	0.35 m/s

Brakes

Service brake	Wet disc break with oil bath. No maintenance is needed.
Parking brake	Disc brake, spring applied and hydraulic release

Starter battery

Tension	2x12 V
Capacity	165 Ah

Gradeability

	2 km/h	0 km/h
Laden at continuous operation	18	24

Drawbar pull

Maximum	280 kN
Maximum 2 km laden	200 kN

Noise level

Cab	74 dB
-----	-------

Optional equipment

- _ Automatic lubrication system.
- _ Cameras system.
- _ Tyre pressure control system.
- _ Fire suppression system
- _ Fleet vehicle management (electronic control system)
- _ Air-conditioner system
- _ One or two-stages mast and fork carriage suitable for each application (use).

MACHINERY RANGE

Reach stackers

- _ Loads from 10 to 90 t



General load Lift Trucks

- _ Light duty range from 8 to 15 t
- _ Medium duty range from 16 to 25 t
- _ Heavy duty range from 28 to 60 t



Lift Trucks for containers

- _ For laden containers from 32 to 50 t
- _ For unladen containers from 3 to 8 heights
- _ Containers standard handling
- _ Containers longitudinal handling



Spreaders

- _ Telescopic from 20 to 45'
- _ Fixed
- _ Intermodal handling (Piggy- back)



UP LIFTING VERTICAL, S.A.

Ronda de la Industria, Parc 151, Pol. Sepes, 22006
Huesca
Tel. 974 229 832 Fax. 974 242 481
uplifting@gaypu.com

www.uplifting.es

9-4400E-01-13-008-0