

MACHINERY RANGE

Reach stackers

- _ Loads from 10 to 90 t



General load Lift Trucks

- _ Light duty range from 8 to 15 t
- _ Medium duty range from 16 to 25 t
- _ Heavy duty range from 28 to 60 t



Lift Trucks for containers

- _ For laden containers from 32 to 50 t
- _ For unladen containers from 3 to 8 heights
- _ Containers standard handling
- _ Containers longitudinal handling



Spreaders

- _ Telescopic from 20 to 45'
- _ Fixed
- _ Intermodal handling (Piggy- back)



UP

TUP 80-4000

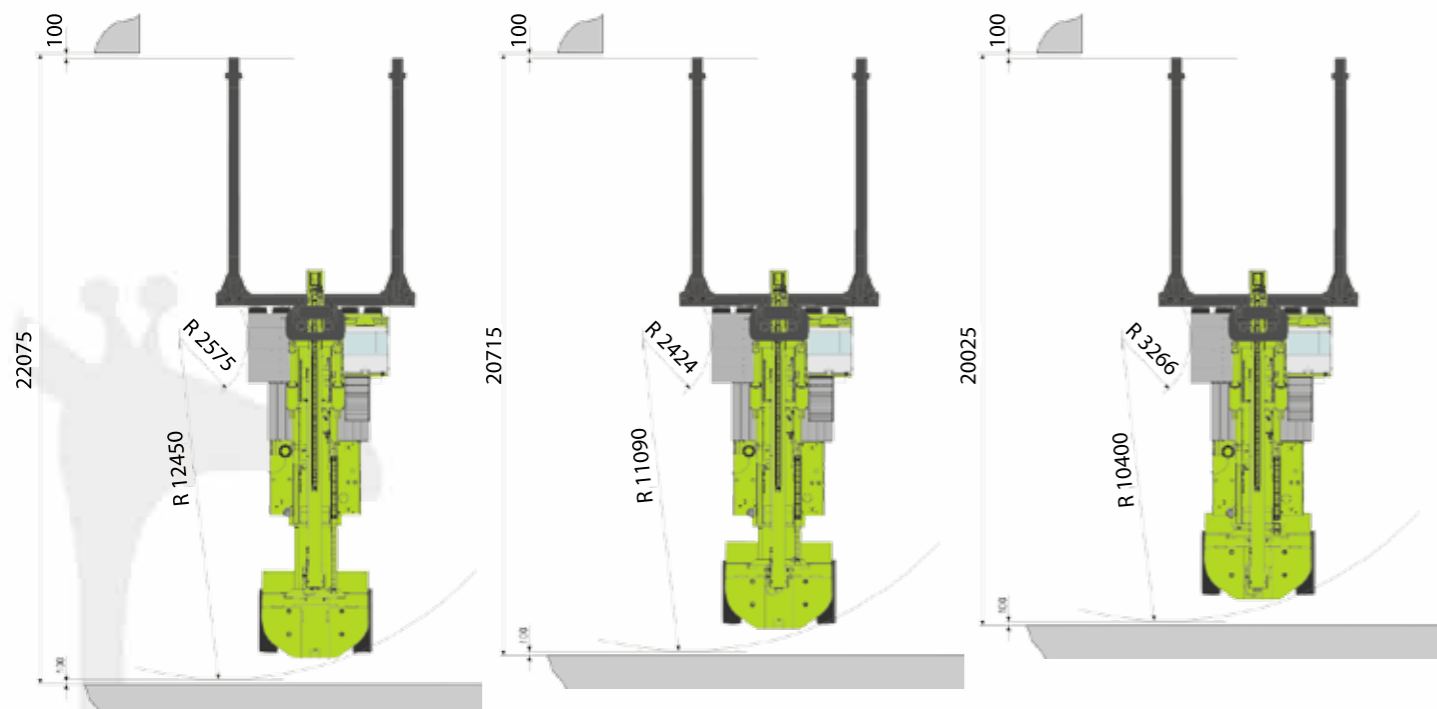
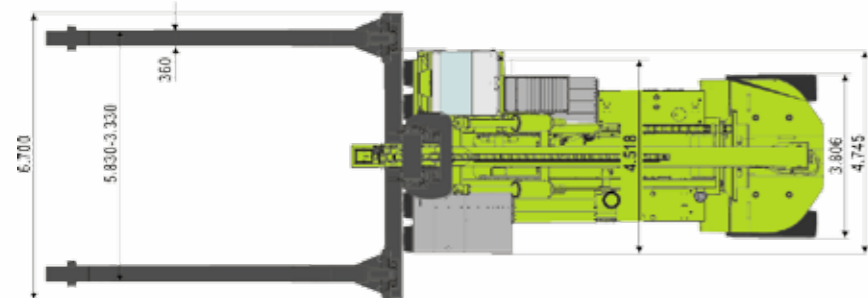
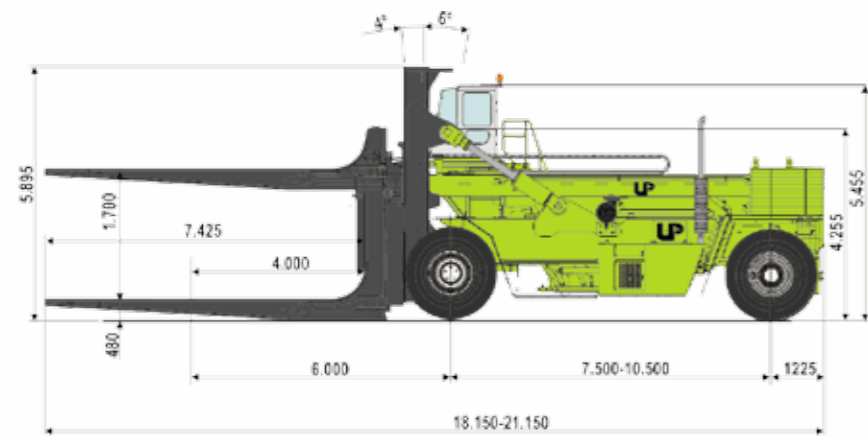
Forklift for general loads
80 tonnes



TUP 80-4000

Forklift for general loads, 80 tonnes, 4000 mm load centre.

Dimensions (mm)



Weights

	Unladen
Front axle	18,1 t
Rear axle	65,0 t
Total	146,1 t
	Laden
Front axle	206,8 t
Rear axle	19,3 t
Total	226,1 t

Cab

- Excellent visibility all around: ISO/DIS 13564-1
- Operator's seat with air suspension
- Tinted safety glass
- Sideways tilting
- Tilting steering column
- Sound proofing ISO/TS 3691 - 7:2011
- Easy accessibility
- Joystick which controls mast and accessories.

Safety

- Safety-glass is used in the whole machine.
- Functions control by electronic system.
- Seat belt is incorporated.
- Non-slip steps to get the cabin.

Tyres

	Front	Rear
Number	4	2
Dimensions	24.00-35 48PR	24.00-35 48PR

Electronic control system

- 7" tactile TFT master color display
- Engine, transmission and satellite modules control
- External GSM modem
- Large internal memory for events and logging
- Instantaneous display of warnings

Transmission

Manufacturer	ZF
Model	4WG311

Steering

Hydraulic

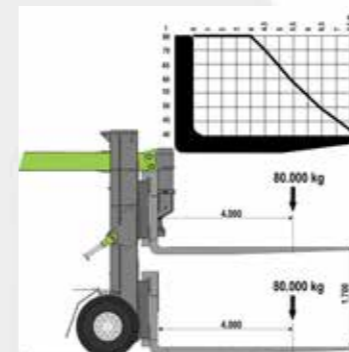
Driving axle

Manufacturer	KESSLER
Model	D111PL447/PL545 NLB

Noise level

Cab	74 dB
-----	-------

Load diagram



Environment

- Lowering toxic emissions engine in accordance with Stage IV/Tier 4f.
- The use of high elasticity steel ensures the diminution of harmful emissions to the environment.
- Stage II/Tier 2 or Stage IIIA/Tier 3 engines for non-regulated regions which do not belong to the EU.

Toughness

- Large sections made of high strength steel.
- Critical resistant elements get a visual and a controlled testing inspection once welded.
- A latest generation welding robot is used for welding.

Engine

Manufacturer	VOLVO
Model	TAD 1341 VE
Power (ISO 3046/2534)	275 kw (2100 rpm)
Torque	1900 N m (1400 rpm)
Cylinders	6
Displacement	12.8 L

Speeds

	Unladen	Laden
Lift	0.15 m/s	0.13 m/s
Lowering	0.15 m/s	0.20 m/s

Brakes

Service brake	Oil bath disc brake. No maintenance is needed
Parking brake	Disc brake. Spring applied and hydraulic released.

Starter battery

Tension	2x12 V
Capacity	165 Ah

Gradeability

	2 km/h	0 km/h
Laden at continuous operation	20	25

Drawbar pull

Maximum	350 kN
Maximum 2 km laden	250 kN

Optional equipment

- Automatic lubrication system.
- Cameras system.
- Tyre pressure control system.
- Fire suppression system
- Fleet vehicle management (electronic control system)
- Air-conditioner system